

ORDER DATA

Part.-No.

Optical smoke detector

Application: Smoke detector for the automatic early detection of fire for controlling of the emergency open function of a SHEV group, for connection in the detector line of a control unit.



TECHNICAL DATA (Rated values)

Measuring element:	photo electric / scattered light principle
Operating voltage:	8,5 – 33 V DC
Standby current:	< 100 µA
Housing:	Surface mounting, plastic (ABS), pearl white
Dimensions (WxHxD):	Ø100 x 50 mm
Connections:	Screw terminals 1,0 mm ² (rigid wire)
Protection rating:	IP23D
Display:	Alarm LED

Feature/Equipment

- Fire algorithms for avoiding false alarms, automatic alarm threshold tracking
- According to EN 54-7, Connection to the **detector line input**

VERSIONS

Detector with surface mounting base	531520		
Detector	531518		
Surface mounting base	531519		

ACCESSORIES

Ball protection (white painted steel grid) e.g. use in sporthalls	513546		
-------------------------------------------------------------------	--------	--	--

Head sensitive fire detector

Application: Heat detector for the automatic control of the emergency open function of a SHEV group of a SHEV control unit.



TECHNICAL DATA (Rated values)

Measuring element:	Bimetal switch
Operating voltage:	24 V DC
Contact load:	40 V DC / 0,5 A
Standby current:	< 10 mA
Housing:	Surface mounting, plastic (ABS), white
Dimensions (WxHxD):	Ø56 x 77 mm
Connections:	Screw terminals 1,0 mm ² (rigid wire)
Protection rating:	IP20

Feature/Equipment

- With base for surface mounting

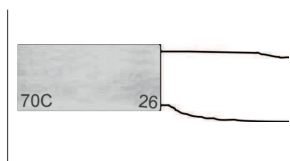
VERSIONS

Connection in detector line	NO switch 70° C	533205		
Connection in drive line	NC switch 70° C	533200		
Connection in drive line	NC switch 90°C	533300		

Head sensitive detector clip 70°C

533201

Application: Heat detector for controlling of the emergency open function of a SHEV group, for connection in the drive line.



Measuring element:	Bimetal switch with ceramic housing
Operating voltage:	24 V DC
Contact type:	NC switch at 70°C
Contact load:	40 V DC / 0,5 A
Standby current:	< 10 mA

Feature/Equipment

- No housing, connection in the **monitoring line of the drive output** of a SHEV control unit

ORDER DATA

Part.-No.

HSE – Break-glass unit main control panel

Application: Break-glass unit with indicators and buttons for the manual control of the emergency open and close functions of a SHEV group, for connection in the detector line of a control unit.



TECHNICAL DATA (Rated values)

Operating voltage:	24 V DC
Ambient temperature range:	-5°C ... + 40°C
Housing:	Surface mounting, plastic (ABS)
Dimensions (WxHxD):	130 x 130 x 32 mm
Connections:	Screw terminal, 1,0 mm ² (rigid wire)
Protection rating:	IP41
Display:	Emergency OPEN, power, fault
Control elements:	Buttons for emergency OPEN / CLOSE

Feature/Equipment

- Lockable, glazed door (including key)
- **Connection to the detector line input**
- HSE orange: **VdS certification no. G 501006**

VERSIONS

HSE red	(similar to RAL 3000)	528691		
HSE yellow	(similar to RAL 1018)	528692		
HSE grey	(similar to RAL 7035)	528693		
HSE blue	(similar to RAL 5009)	528694		
HSE orange	(similar to RAL 2011)	528695		

HSE-N – Break-glass unit secondary control panel

Application: Break-glass unit with indicator and button for the manual control of the emergency open function of a SHEV group, for connection in the detector line of a control unit.



TECHNICAL DATA (Rated values)

Operating voltage:	24 V DC
Ambient temperature range:	-5°C ... + 40°C
Housing:	Surface mounting, plastic (ABS)
Dimensions (WxHxD):	130 x 130 x 32 mm
Connections:	Screw terminal, 1,0 mm ² (rigid wire)
Protection rating:	IP41
Display:	Emergency OPEN
Control elements:	Button for emergency OPEN

Feature/Equipment

- Lockable, glazed door (including key)
- **Connection to the detector line input**
- HSE orange: **VdS certification no. G 501006**

VERSIONS

HSE-N red	(similar to RAL 3000)	525001		
HSE-N yellow	(similar to RAL 1018)	525002		
HSE-N grey	(similar to RAL 7035)	525003		
HSE-N blue	(similar to RAL 5009)	525004		
HSE-N orange	(similar to RAL 2011)	525005		

ORDER DATA

Part.-No.

HSE – Break-glass unit main control panel (aluminium housing)

Application: Break-glass unit with indicators and buttons for the manual control of the emergency open and close functions of a SHEV group, for connection in the detector line of a control unit.

**TECHNICAL DATA (Rated values)**

Operating voltage:	24 V DC
Ambient temperature range:	-5°C ... + 40°C
Housing:	Surface mounting, aluminium
Dimensions (WxHxD):	125 x 125 x 33 mm
Connections:	Screw terminal, 1,0 mm ² (rigid wire)
Protection rating:	IP41
Display:	Emergency OPEN, power, fault
Control elements:	Buttons for emergency OPEN / CLOSE

Feature/Equipment

- Lockable, glazed door (including key)
- **Connection to the detector line input**

VERSIONS

HSE-Alu red	(similar to RAL 3001)	527550		
HSE-Alu yellow	(similar to RAL 10121)	527551		
HSE-Alu grey	(similar to RAL 7035)	527552		
HSE-Alu blue	(similar to RAL 5012)	527553		
HSE-Alu orange	(similar to RAL 2011)	527554		
Protective housing IP54 for break-glass unit HSE-Alu grey – add-on kit		527559		

HSE – Break-glass unit for gas-pressure generators

Application: Break-glass unit with indicators and button for the manual control of the emergency open functions of a SHEV group with gas-pressure generators, for connection in the detector line of a control unit.

**TECHNICAL DATA (Rated values)**

Operating voltage:	24 V DC
Ambient temperature range:	-5°C ... + 40°C
Housing:	Surface mounting, plastic (ABS)
Dimensions (WxHxD):	130 x 130 x 32 mm
Connections:	Screw terminal, 1,0 mm ² (rigid wire)
Protection rating:	IP41
Display:	Emergency OPEN, power, fault
Control elements:	Button for emergency OPEN

Feature/Equipment

- Lockable, glazed door (including key)
- **Connection to the detector line input**

VERSIONS

HSE-DG red	(similar to RAL 3000)	528655		
HSE-DG yellow	(similar to RAL 1018)	528656		
HSE-DG grey	(similar to RAL 7035)	528657		
HSE-DG blue	(similar to RAL 5009)	528658		
HSE-DG orange	(similar to RAL 2011)	528659		

ORDER DATA

Part.-No.

HSE – Break-glass unit with radio transmitter

Application: Break-glass unit with radio transmitter for the manual control of the emergency open functions of a SHEV group via Radio control receiver connected in the detector line of a control unit.



TECHNICAL DATA (Rated values)

Operating voltage:	24 V DC
Ambient temperature range:	-5°C ... + 40°C
Housing:	Surface mounting, plastic (ABS)
Dimensions (WxHxD):	130 x 130 x 32 mm
Protection rating:	IP41
Display:	Emergency OPEN
Control elements:	Button for emergency OPEN

Feature/Equipment

- Lockable, glazed door (including key)
- **Requires radio receiver!**

VERSIONS

HSE yellow	(similar to RAL 1018)	528031		
HSE grey	(similar to RAL 7035)	528029		
HSE orange	(similar to RAL 2011)	528032		

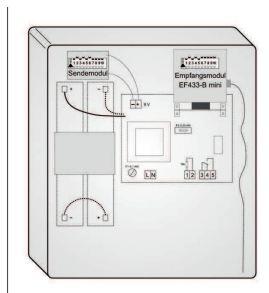
ACCESSORIES

Battery	for versions until March 2003	6213		
Battery	for versions from March 2003	6215		

HSE – Radio receiver for EMB control units

500020

Application: Receives, evaluates and sends radio data of a break-glass unit with radio transmitter to the detector input of a SHEV control unit.



TECHNICAL DATA (Rated values)

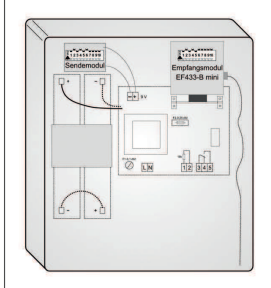
Operating voltage:	230 V AC
Ambient temperature range:	-5°C ... + 40°C
Housing:	Surface mounting, plastic (ABS) grey
Dimensions (WxHxD):	220 x 280 x 105 mm
Protection rating:	IP54

Feature/Equipment

- Includes backup power supply and 2 batteries 12V DC/ 2,2 Ah
- **Connection to the detector line input**

ORDER DATA

	Part.-No.			
HSE – Radio control repeater	500025			
Application: Amplifies radio signals of a break-glass unit with radio transmitter.				

**TECHNICAL DATA (Rated values)**

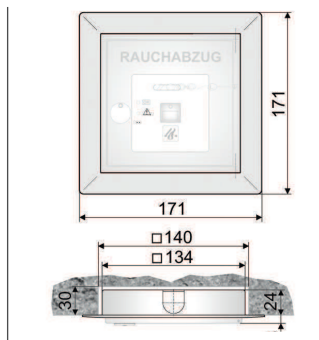
Operating voltage:	230 V AC
Ambient temperature range:	-5°C ... + 40°C
Housing:	Surface mounting, plastic (ABS) grey
Dimensions (WxHxD):	220 x 280 x 105 mm
Protection rating:	IP54

Feature/Equipment

- Includes backup power supply and 2 batteries 12V DC/ 2,2 Ah

ORDER DATA

		Part.-No.	
HSE – Frame for flush mounting		528015	
Application: Flush mounting of breakglass units.			



TECHNICAL DATA

Housing:	Surface mounting, steel sheet
Dimensions (WxHxD):	171 x 171 x 26 mm
Surface:	powder-coated in light grey w/o structure
Installation Dimensions:	140 x 140 x 30 mm

Feature/Equipment

- Suitable for break glass units with plastic housing 130 x 130 x 32 mm

HSE – Labels in foreign languages – Version 1		143-4-8-4-8		
Application: Stick on break-glass units.				



TECHNICAL DATA

Raw material:	Bonding sheet
Colour:	white
Languages:	English
	French
	Danish
	Dutch
	Chinese
	Russian
	Norwegian

Feature/Equipment

HSE – Labels in foreign languages – Version 2		143-5-8-4-8		
Application: Stick on break-glass units.				



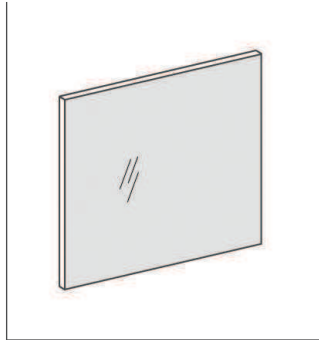
TECHNICAL DATA

Raw material:	Bonding sheet
Colour:	white
Languages:	Swedish
	Portugese
	Czech
	Hungarian
	Polish
	Turkish
	Hebrew

Feature/Equipment

ORDER DATA

		Part.-No.		
HSE – Glass pane		527002		
Application: Replacement glass pane for all breakglass units.				



TECHNICAL DATA

Material:

Glass

Dimensions (WxHxD):

80 x 80 x 1 mm

Feature/Equipment

- Packaging unit (PU) containing 10 glass panes

OPTIONS				
		Part.-No.		
Installation of break-glass unit into control unit housing		528022		
Protective housing IP54 for break-glass unit HSE-Alu grey – add-on kit		527559		

ORDER DATA

Part.-No.

Ventilation button (with foil push buttons and displs)

Application: Ventilation button for connection to the ventilation inputs of SHEV or natural ventilation control units.



TECHNICAL DATA (Rated values)

Contact type: 2 NO switches
 Switching capacity: max. 42V / 50 mA
 Current consumption display: < 10 mA
 Housing: plastic, white (similar to RAL 1013)
 Dimensions (WxHxD): Surface mounting: 81 x 81 x 44 mm
 Flush mounting: 81 x 81 x 11 mm
 Connections: Screw terminal 1,5 mm² (rigid wire)
 Protection rating: IP20
 Functions: OPEN-STOP-CLOSE
 Display: LED for OPEN, CLOSE

Feature/Equipment

- Push buttons **without** mechanical locking

VERSIONS

Surface mounting	529020			
Flush mounting (in box Ø60 mm)	529050			

Ventilation button

Application: Ventilation button for connection to the ventilation inputs of SHEV or natural ventilation control units.



TECHNICAL DATA (Rated values)

Contact type: 2 NO switches
 Switching capacity: 230 V AC / 10 A
 Housing: plastic, white (similar to RAL 1013)
 Dimensions (WxHxD): Surface mounting: 61 x 61 x 44 mm
 Flush mounting: 81 x 81 x 11 mm
 Connections: Screw terminal 1,5 mm² (rigid wire)
 Protection rating: IP20
 Functions: OPEN / CLOSE

Feature/Equipment

- Push buttons **without** mechanical locking, stop function when both buttons are pushed

VERSIONS

Surface mounting	529000			
Flush mounting (in box Ø60 mm)	529200			

Ventilation key switch

Application: Ventilation button for connection to the ventilation inputs of SHEV or natural ventilation control units.



TECHNICAL DATA (Rated values)

Contact type: 2 NO switches
 Switching capacity: 230 V AC / 10 A
 Housing: plastic, white (similar to RAL 1013)
 Dimensions (WxHxD): Surface mounting: 81 x 81 x 44 mm
 Flush mounting: 81 x 81 x 11 mm
 Connections: Screw terminal 1,5 mm² (rigid wire)
 Protection rating: IP20
 Functions: OPEN-STOP-CLOSE

Feature/Equipment

- Switch with semicylinder (DIN 19525) and 3 keys

VERSIONS

Surface mounting	529300			
Flush mounting (in box Ø60 mm)	529400			

ORDER DATA

	Part.-No.			
Room temperature controller	483200			
Application: Thermostat as on-off controller for room temperature detection.				



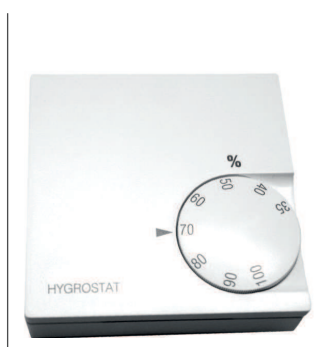
TECHNICAL DATA (Rated values)

Measuring element:	Bimetal switch
Contact type:	1 change-over switch
Switching capacity:	230 V AC / 5 A
Settings:	0 – 30 °C
Housing:	Surface mounting, plastic, white
Dimensions (WxHxD):	74,5 x 74,5 x 25 mm
Connections:	Screw terminal 1,5 mm ² (rigid wire)
Protection rating:	IP30

Feature/Equipment

- Connection to **ventilation inputs** of SHEV or natural ventilation control units

Hygrostat	483050			
Application: Hygrostat as on-off controller for room humidity detection.				



TECHNICAL DATA (Rated values)

Measuring element:	Bimetal switch
Contact type:	1 Change-over switch
Switching capacity:	230 V AC / 5 A
Settings:	35 – 10% humidity
Housing:	Surface mounting, plastic, white
Dimensions (WxHxD):	74,5 x 74,5 x 25 mm
Connections:	Screw terminal 1,5 mm ² (rigid wire)
Protection rating:	IP30

Feature/Equipment

- Connection to **ventilation input** of SHEV or natural ventilation control units

CO2 – Air quality sensor	483710			
Application: Sensor for the detection and evaluation of the CO2 concentration inside rooms.				



TECHNICAL DATA (Rated values)

Operating voltage:	24 V DC (+/-5%)
Measuring element:	electronic
Contact type:	2 Normal open switch
Pulse duration:	3,5 sec.
Switching capacity:	230 V AC / 0,5 A
Measuring range:	0 – 3000 ppm CO2
Housing:	Surface mounting, plastic, white
Dimensions (WxHxD):	78 x 78 x 35 mm
Connections:	Screw terminal 1,5 mm ² (rigid wire)
Protection rating:	IP30
Display:	3 LED (green, yellow, red)

Feature/Equipment

- Connection to **ventilation input** of SHEV or natural ventilation control units

ORDER DATA

	Part.-No.
WRAG2 – Wind / Rain evaluation unit	482005

Application: For the evaluation of wind and rain signals from wind and rain sensors Type 7x/8x or rain sensors operating with 24 V DC and their transmission via 2 volt free contacts, with additional input for connecting of ventilation buttons (or time switches etc.).



TECHNICAL DATA (Rated values)

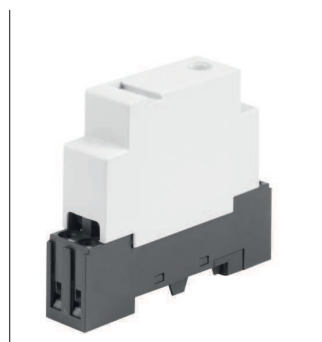
Operating voltage:	230 V AC, 50 Hz
Standby consumption:	<100 mA
Inputs:	Rain senso 24 V DC, wind sensor, ventilation button
Display:	Power, wind, rain
Wind speed range:	2,5 – 20 m/s, adjustable
Outputs:	2 Change-over switches, 230 V AC / 5 A
Housing:	plastic, surface RAL 7035, bottom RAL 7021
Dimensions (WxHxD):	105 x 86 x 58 mm
Installation:	35-mm mounting rail
Connections:	Screw terminals 1,5 mm ² (rigid wire)
Protection rating:	IP40

Feature/Equipment

- Signal transmission for wind or/and rain (separately or together) adjustable via 4 DIP switches, direct connection of drives up to max. 5 A, switch-on time delay for wind and rain signal, and switch-off time delay for wind signal

REL-WRAG2 – Relay for contact multiplier	487020
-------------------------------------------------	---------------

Application: Relay as contact multiplier of output signals of wind and rain evaluation unit WRAG2.



TECHNICAL DATA (Rated values)

Operating voltage:	230 V AC, 50 Hz
Contact type:	2 Change-over switches
Switching capacity:	230 V / 8 A
Connections:	Screw terminal 1,5 mm ² (rigid wire)

Feature/Equipment

- With base for installation on 35-mm mounting rail

Compact distributor housing for WRAG2	482011
----------------------------------------------	---------------

Application: Surface mounting distributor housing for the installation and wiring of wind and rain evaluation WRAG2 and max. 2 relays.



TECHNICAL DATA

Material:	plastic (ABS)
Type of installation:	Surface mounting
Protection rating:	IP30
Dimensions (WxHxD):	182 x 180 x 82 mm
Reserve space:	2 REL-WRAG2

Feature/Equipment

- w/o fixing screws

ORDER DATA

Part.-No.

Distributor housing for WRAG2

482015

Application: Surface mounting distributor housing for the installation and wiring of wind and rain evaluation WRAG2 and max. 6 relays.**TECHNICAL DATA**

Material:	plastic (ABS)
Type of installation:	Surface mounting
Protection rating:	IP30
Dimensions (WxHxD):	303 x 245 x 95 mm
Reserve space:	6 REL-WRAG2

Feature/Equipment

- w/o fixing screws

Wind and rain evaluation Type IV

482008

Application: For the evaluation of wind and rain signals from wind and rain sensors Type 7x/8x or rain sensors operating with 24 V DC and their transmission via 3 volt free contacts.**TECHNICAL DATA (Rated values)**

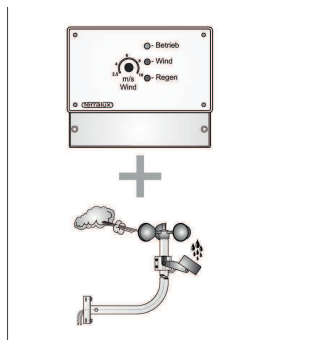
Operating voltage:	230 V AC, 50 Hz
Standby current:	<100 mA
Inputs:	Rain sensor 24 V DC, wind sensor
Display:	Power, wind, rain
Wind speed range:	2,5 – 10 m/s, adjustable
Outputs:	3 Change-over switches, 5 A / 230 V AC
Housing:	plastic, surface RAL 7035, bottom RAL 7021
Dimensions (WxHxD):	212 x 180 x 80 mm
Installation:	Surface mounting
Connections:	Screw terminal 1,5 mm ² (rigid wire)
Protection rating:	IP40

Feature/Equipment

- Direct connection of drives up to max. 5 A, switch-on time delay for wind and rain signal, and switch-off time delay for wind signal
- Suitable for surface mounting

Wind and rain sensor set Typ IV

481990

Application: Set consisting of wind and rain evaluation Type IV with wind and rain sensor set Type 7x/8x, for the evaluation of wind and rain signals and their transmission via 3 volt-free contacts.**TECHNICAL DATA**

See wind and rain control unit Type IV and wind and rain sensor set Type 7x/8x.

Feature/Equipment

- Set including: Wind sensor Type III (Part.-No. 482021), rain sensor Type III (Part.-No. 482010), clamp ring (Part.-No. 519950), bracket for pole or wall mounting (Part.-No. 482093), without mounting screws

ORDER DATA

	Part.-No.			
Wind sensor Type III	482021			
Application: Anemometer with 3 impact resistant wind cups (PA6) for wind speed detection.				



TECHNICAL DATA (Rated values)

Operating voltage:	24 V DC (+/- 20%)
Measuring principle:	Pulse generator, ball beared
Housing:	Aluminium Ø36 mm, untreated
Wind cups:	PA6, black
Dimensions:	250 x 250 x 80 mm
Connection cable:	non-halogen cable, approx. 4 m

Feature/Equipment

- For connection with: EMB7300 control units, WM weather module (EMB8000), wind/rain controls WRAG2 and Type IV. With clamp ring for fixing on all the wall/pole brackets with outer diameter Ø36mm

COMPONENTS

Cups for wind sensor Type III	490601			
Clamp ring for wind sensor Type III	515950			

Rain sensor Typ III 24 V DC	480210			
Application: Rain sensor with heated sensor surface and internal control with volt free output contact.				



TECHNICAL DATA (Rated values)

Operating voltage:	24 V DC (+/- 20%)
Standby current:	<150 mA
Measuring principle:	Conductivity measurement, heated sensor
Hysteresis:	5 min
Display:	Output active
Output:	Change-over switch, 5 A / max. 48 V
Protection rating:	IP65
Housing:	Surface mounting, ABS black with bracket (stainless steel)
Dimensions:	100 x 85 x 172 mm
Connection cable:	non-halogen cable, approx. 4 m

Feature/Equipment

- For connection with: EMB7300 control units, WM weather module (EMB8000), wind/rain controls WRAG2 and Type IV

Rain sensor Typ III 230 V AC	480110			
Application: Rain sensor with heated sensor surface and internal control with volt free output contact.				



TECHNICAL DATA (Rated values)

Operating voltage:	230 V AC (50 Hz)
Power consumption:	<1,5 VA
Measuring principle:	Conductivity measurement
Display:	Output active
Output:	Change-over switch, 5 A / max. 230 AC
Protection rating:	IP65
Housing:	Surface mounting, ABS black with bracket (stainless steel)
Dimensions:	100 x 85 x 172 mm
Connection cable:	non-halogen cable, approx. 4 m

Feature/Equipment

- Single device for the feed from electric mains power supply

ORDER DATA

Part.-No.

WR-Set Type 7x/8x – Wind und Rain Sensor Set

482100

Application: Sensors for wind and rain to work with an evaluation unit WRAG2 or Typ IV, a WM module or directly with a SHEV control unit, for closing and blocking the natural ventilation under bad weather conditions.



TECHNICAL DATA (Rated values)

Rated voltage: 24 V DC (+/- 20%)
Rain sensor Type III – heated sensor surface, switch-off delay approx. 5 min.
 Contact: 1 Change-over switch, max. 48 V / 5A
 Current consumption: <150 mA
 Housing: Surface mounting, ABS black with stainless steel bracket
 Dimensions (WxHxD): 100 x 85 x 172 mm
 Connection cable: Non-halogen cable, approx. 4 m
 Volt free contact: 1 Change-over switch, max. 48 V / 1A
Wind sensor Type III – Anemometer with 3 impact resistant wind cups (PA6)
 Measuring principle: Pulse generator
 Dimensions: 250 x 250 x 80 mm
 Connection cable: non-halogen cable, approx. 4 m

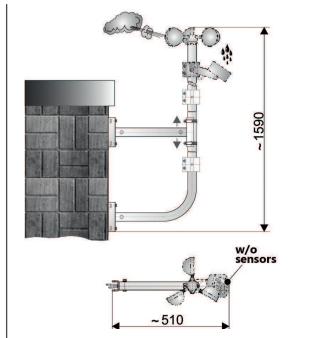
Feature/Equipment

- Set including: Wind sensor Type III (Part.-No. 482021), rain sensor Type III (Part.-No. 480210), clamp ring (Part.-No. 519950), aluminium bracket for pole or wall mounting (Part.-No. 482093), without mounting screws

Wall bracket for wind and rain sensor

491200

Application: Wall bracket with dual fixings for wind and rain sensors.



TECHNICAL DATA

Height: app. 1500 mm
 Outreach: app. 510 mm
 Material: Aluminium Ø36mm

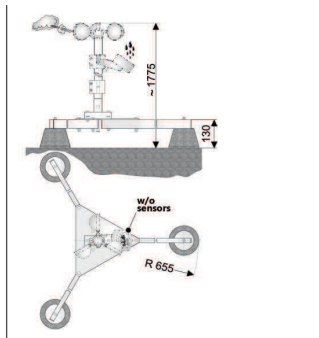
Feature/Equipment

- w/o fixing screws and sensors

Pole bracket for wind and rain sensors

491101

Application: Pole bracket for the fixing of wind and rain sensors at flat roofs.



TECHNICAL DATA

Height: app. 1775 mm
 Base area: app. Ø1300 mm
 Material: Aluminium Ø36mm with 3 stable concrete feet

Feature/Equipment

- w/o sensors

ORDER DATA

	Part.-No.			
Time switch	722374			
Application: For the time controlled opening / closing of ventilation lines, with 30 day- and week-programm steps.				

**TECHNICAL DATA (Rated values)**

Operating voltage:	230 V AC
Contact type:	change-over switch
Switching capacity:	230 V AC / 16 A
Housing:	plastic, white, for 35 mm top rail
Dimensions (WxHxD):	17,6 x 63 x 90 mm
Connections:	Screw terminal 1,5 mm ² (rigid wire)
Protection rating:	IP20

Feature/Equipment

- Connection to the **ventilation input** of SHEV or natural ventilation control units

OPTIONS

Cabinet mounting (a larger housing may be required)	500113			
-----------------------------------------------------	--------	--	--	--

REL1 – Relay for status forwarding	659950			
Application: For the transmission of various functions or status of a SHEV or natural ventilation control unit to external devices.				

**TECHNICAL DATA (Rated values)**

Operating voltage:	24 V DC
Contact type:	3 Change-over switch
Switching capacity:	230 V / 10 A
Connections:	Screw terminal 1,5 mm ² (rigid wire)

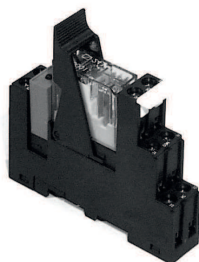
Feature/Equipment

- With base for installation at 35-mm mounting rail and suppressor diode

OPTIONS

Cabinet mounting (a larger housing may be required)	500113			
-----------------------------------------------------	--------	--	--	--

REL2 – Relay for signals from / to BMS	659914			
Application: For the transmission/reception of various functions/status of a SHEV or natural ventilation control unit to/from external devices.				

**TECHNICAL DATA (Rated values)**

Operating voltage:	24 V DC
Contact type:	change-over switch
Switching capacity:	42 V / 0,5 A
Connections:	Screw terminal 1,5 mm ² (rigid wire)

Feature/Equipment

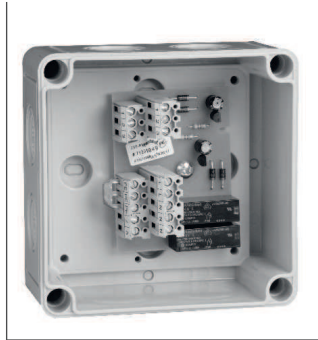
- With base for installation at 35-mm mounting rail, suppressor diode, 3 terminals and installation into control unit

OPTIONS

Cabinet mounting (a larger housing may be required)	500113			
-----------------------------------------------------	--------	--	--	--

ORDER DATA

	Part.-No.
Relay interface for 230 V drives	670071
Application: Relay for the connection of 230 V AC drives to a 24 V DC drive line, triggering by pole change of 24 V DC drive line.	



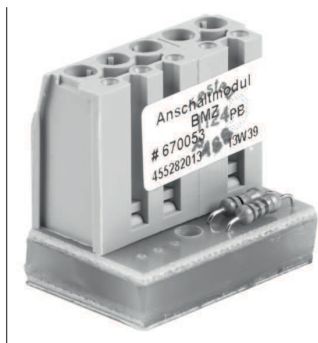
TECHNICAL DATA (Rated values)

Operating voltage:	24 V DC, +/-20% (max. 2 Vpp)
Standby consumption:	<100 mA
Switching capacity:	230 V AC / 3 A
Drive type:	S2, S3, S12, MP
Ambient temperature range:	0 ... +70 °C
Housing:	Surface mounting, plastic, white
Dimensions (WxHxD):	98 x 98 x 58 mm
Connections:	Screw terminals 4,0 mm ² (rigid wire)
Protection rating:	IP54

Feature/Equipment

- Connection to the **drive line** of SHEV or natural ventilation control units

FAS interface module	670053
Application: Module for the automatic control of the emergency open function via volt free contact of a fire alarm system.	



TECHNICAL DATA (Rated values)

Operating voltage:	24 V DC
Standby consumption:	<10 mA
Ambient temperature range:	0 ... +40 °C
Housing:	w/o, equipped circuit board
Dimensions (WxHxD):	27 x 19 x 13 mm
Connections:	Screw terminal 1,5 mm ² (rigid wire)
FAS contact:	Normal open switch at alarm status

Feature/Equipment:

- For connection to **detector line input** of SHEV control units, with line monitoring between control unit and module

Drive line end module	670052
Application: For installation in the last or only junction box for the line monitoring of drive line.	



TECHNICAL DATA (Rated values)

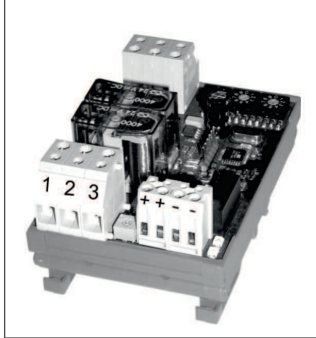
Operating voltage:	24 V DC (+/-5%)
Standby consumption:	<10 mA
Ambient temperature range:	0 ... +70 °C
Housing:	w/o, equipped circuit board
Dimensions (WxHxD):	27 x 19 x 13 mm
Connections:	3 single cores

Feature/Equipment

- For connection into **drive line** of SHEV control units

ORDER DATA

		Part.-No.		
GLT-LZM3 – Runn time module 0 – 10 V for ventilation		500119		
Application: For the stroke control with 0 – 10 V signal (0 – 100%) of one drive line.				

**TECHNICAL DATA (Rated values)**

Operating voltage:	24 V DC
Control voltage:	0 – 10 V DC
Drive run time range:	5 – 999 sec.
Contact load:	30 V / < 0,5 A
Housing:	plastic, for 35-mm mounting rail
Dimensions (WxHxD):	74,5 x 74,5 x 25 mm
Connections:	Screw terminal 1,5 mm ² (rigid wire)

Feature/Equipment

- For the connection to **drive line** of SHEV or natural ventilation control units
- Cabinet mounting requires free space within housing
- The setting of the drive run time (for the stroke limitation) corresponds to 10 V (100% open). The ventilation line is closed at 0 V (0% open)
- The intermediar positions correspond to the applied 0 – 10 V voltage
- Operating voltage polarised in close direction: Drives are following the 0 – 10 V signal
- Operating voltage polarised in open direction: 0 – 10 V signal is overdriven, drives run to end limit OPEN (Emergency-open function)

OPTIONS

Cabinet mounting (a larger housing may be required)	500113			
------------------------------------------------------------	---------------	--	--	--